

WANT FLEXIBILITY AT AN AFFORDABLE PRICE?

DEMAND **icc** MULTI-MEDIA S O L U T I O N S



ADVANCING AHEAD >

for...

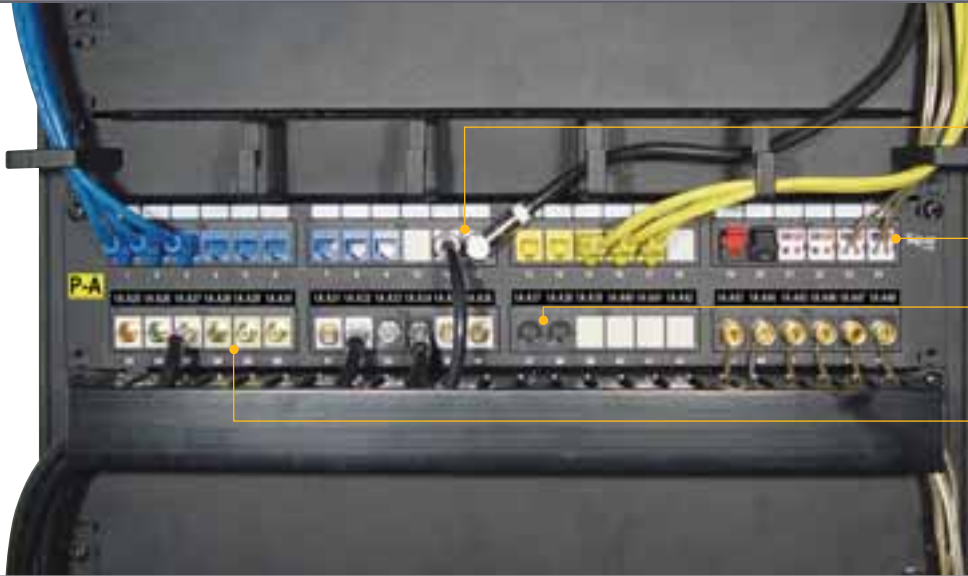
- COMMERCIAL, INDUSTRIAL, & RESIDENTIAL
- COPPER & FIBER
- TELECOM & EQUIPMENT ROOMS

Premium**Products** | Proven**Performance** | Competitive**Prices**



MULTI-MEDIA SOLUTIONS

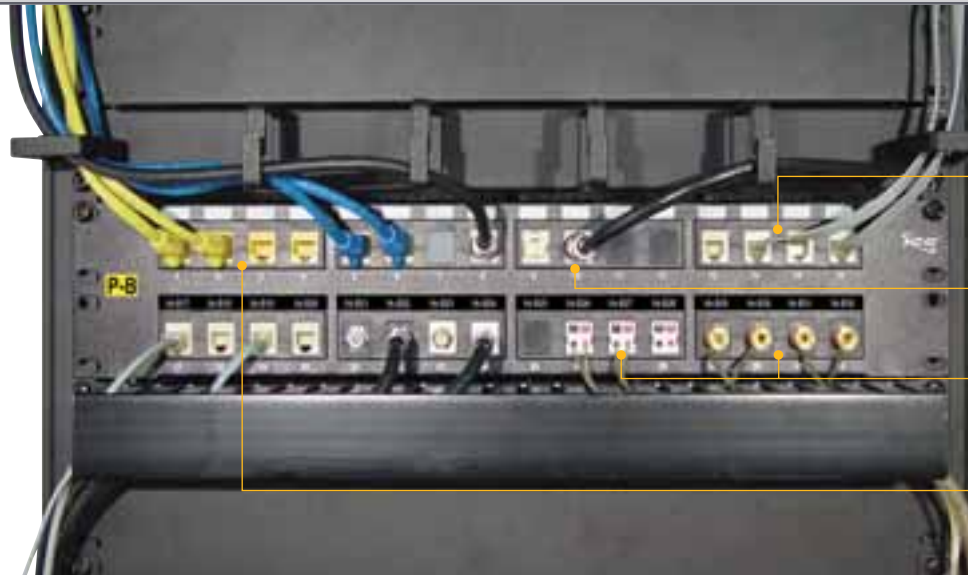
PROFESSIONAL INSTALLATIONS



CONFERENCE ROOMS

- BNC connectors for security options.
- Complete high density speaker connections for optimum sound quality.
- S-video allows for quick video connections
- RCA connectors for all laptop and projector audio/video requirements.

PROFESSIONAL INSTALLATIONS



SMALL OFFICES

- Voice modular connectors for key phone systems.
- BNC connectors for security options.
- Speaker connections to intercom ceiling and in-wall speakers.
- Data connections for all data communications.

PROFESSIONAL INSTALLATIONS



COMMERCIAL AND INDUSTRIAL

- Color ID Caps for additional location identification and system administration.
- Fiber connections for long data and/or security runs.
- Voice and data connectors for phone PBX applications.
- Speaker connectors for all audio needs; paging systems, etc.
- BNC connectors for security connection to equipment and cameras.

BLANK PATCH PANELS & ACCESSORIES

HIGH DENSITY (HD) BLANK PATCH PANELS

High density blank patch panels are designed with a flush mount design and provide additional capacity within the same space.



These patch panels accept all HD ICC modular connectors, but do not accept EZ connectors



Allows patch cords to fit perfectly side by side in high density applications



HD modular connectors have a rear split back IDC and can be terminated while in the patch panel



The 12-port vertical blank patch panel is designed to be wall mounted for connectivity in small areas

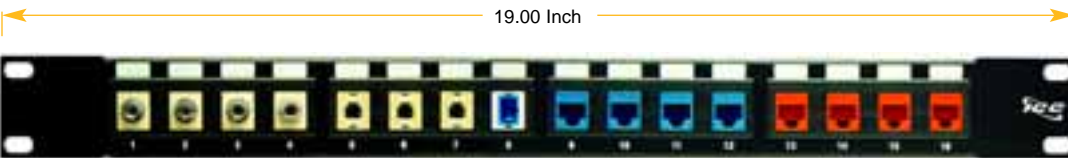
Ordering Information

High Density Blank Patch Panels

IC107BP241	24-Port, 1 RMS
IC107BP482	48-Port, 2 RMS
IC107BP723	72-Port, 3 RMS
IC107BP964	96-Port, 4 RMS
IC107BP12V	12-Port, Vertical with Mounting Bracket

FLUSH MOUNT BLANK PATCH PANELS

Flush mount blank patch panels are designed with modular connector retainers to create a neat and clean appearance.



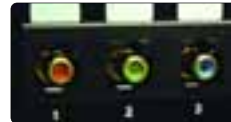
These patch panels allow all ICC modular connectors to be mounted flush with the front of the panel



Designed for fast and easy moves, adds, and changes



Designed with a series of modular connector retainers on each panel creating a rigid fit and added stability



Can be customized with all ICC voice, data, audio, video, and fiber optic modular connectors

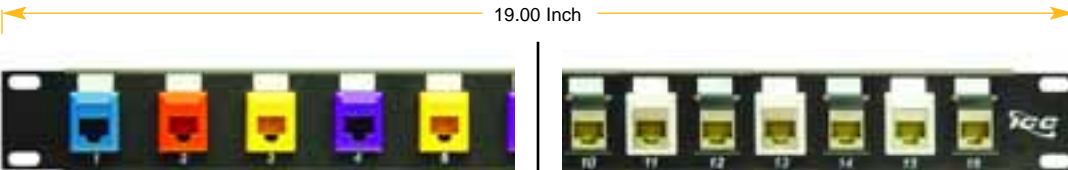
Ordering Information

Flush Mount Blank Panels

IC107BP012	12-Port, 1 RMS
IC107BP016	16-Port, 1 RMS
IC107BP024	24-Port, 2 RMS
IC107BP032	32-Port, 2 RMS
IC107BP048	48-Port, 3 RMS
IC107BP064	64-Port, 4 RMS
IC107BP096	96-Port, 6 RMS
IC107BP8VB	8-Port, Vertical with Mounting Bracket

STANDARD BLANK & SHIELDED ScTP BLANK PATCH PANELS

Standard blank patch panels are designed for easy system administration. Shielded ScTP blank patch panels provide protection from electro-magnetic interference (EMI).



Color ID caps allow for a second location or connection identifier



Can be customized with all ICC voice, data, audio, video, and fiber optic modular connectors



Shielded panels provide protection from (EMI) caused by active equipment



Accepts Shielded ScTP and all other ICC modular connectors

Ordering Information

Standard Blank Panels

IC107PP012	12-Port, 1 RMS
IC107PP016	16-Port, 1 RMS
IC107PP024	24-Port, 2 RMS
IC107PP032	32-Port, 2 RMS
IC107PP048	48-Port, 3 RMS
IC107PP064	64-Port, 4 RMS
IC107PP096	96-Port, 6 RMS
IC107PP128	128-Port, 8 RMS
IC107PP8VB	8-Port, Vertical with Mounting Bracket

Shielded ScTP Blank Panels

IC107PPS16	16-Port, 1 RMS
IC107PPS32	32-Port, 2 RMS
IC107PPS48	48-Port, 3 RMS
IC107PPS64	64-Port, 4 RMS

Color ID Caps

IC107CICxx* Caps, 10 pcs./bag



*xx = BK, BL, GN, GY, N, OR, PR, RD, WH, YL

MODULAR CONNECTORS

Data, Voice, and Fiber Optic Modular Connectors



Data EZ
IC1078L6xx*
 RJ-45 CAT 6,
 Easy (EZ)
*xx = AL, BK, BL, GN, GY, IV, OR, PR, RD, WH, YL
 ●●●●●●●●●●



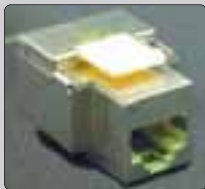
Data EZ
IC1078E5xx*
 RJ-45 CAT 5e,
 Easy (EZ)
*xx = AL, BK, BL, GN, GY, IV, OR, PR, RD, WH, YL
 ●●●●●●●●●●



Data HD
IC1078F6xx*
 RJ-45 CAT 6,
 High Density (HD)
*xx = AL, BK, BL, GN, GY, IV, OR, PR, RD, WH, YL
 ●●●●●●●●●●



Data HD
IC1078F5xx*
 RJ-45 CAT 5e,
 High Density (HD)
*xx = AL, BK, BL, GN, GY, IV, OR, PR, RD, WH, YL
 ●●●●●●●●●●



Data EZ
IC1078S500
 RJ-45 CAT 5e, ScTP
 Screened Twisted Pair,
 Metallic, Easy (EZ)
*xx = BK
 ●



Data
IC107C5Exx*
 RJ-45 CAT 5e,
 Coupler
*xx = BK
 ●



Phone EZ
IC1078V3xx*
 RJ-45 8P8C, CAT 3,
 Easy (EZ)
*xx = AL, BK, BL, GN, GY, IV, OR, PR, RD, WH, YL
 ●●●●●●●●●●



Phone EZ
IC1076V0xx*
 RJ-11 6P6C,
 Easy (EZ)
*xx = AL, BK, BL, GN, GY, IV, OR, PR, RD, WH, YL
 ●●●●●●●●●●



Phone HD
IC1076F0xx*
 RJ-11 6P6C,
 High Density (HD)
*xx = AL, BK, BL, GN, GY, IV, OR, PR, RD, WH, YL
 ●●●●●●●●●●



Phone
IC107C8Rxx*
 RJ-45 8P8C, Pin 1-1
IC107C6Rxx*
 RJ-11 6P6C, Pin 1-1
*xx = BK, GY, IV, WH
 ●●●●



Fiber Optic
IC107ST2xx*
 ST Adapter Module,
 MM/SM, Metal Sleeve
*xx = GY, IV, WH
 ●●●



Fiber Optic
IC107SC2xx*
 SC Adapter Module,
 MM/SM, Metal Sleeve
*xx = GY, IV, WH
 ●●●



Fiber Optic
IC107MRJxx*
 MT-RJ Adapter Module,
 Small Form Factor
*xx = GY, IV, WH
 ●●●



Fiber Optic
IC107Lxx*
 LC Adapter Module,
 Small Form Factor
*xx = AL, BK, BL, GN, GY, IV, OR, PR, RD, WH, YL
 ●●●●●●●●●●

Audio and Video Modular Connectors



Dual Speaker
IC107DSCxx*
 For Both Speaker
 Wires
*xx = AL, BK, IV, WH
 ●●●●



Speaker Binding Post
IC107PMGxx*
 Come in Pairs of 1 Red
 and 1 Black Module
*xx = AL, BK, IV, WH
 ●●●●



Speaker Banana Jack
IC107JMGxx*
 Come in Pairs of 1 Red
 and 1 Black Module
*xx = AL, IV, WH
 ●●●●



Speaker Spring Clip
IC1078F5xx*
 Come in Pairs of 1 Red
 and 1 Black Module
*xx = BK
 ●



F-type Video
IC107FQGWH
 Rear Crimp-on Design
 for Coaxial Cable
*xx = WH
 ●



F-type Video
IC107B5Gxx* Gold
IC107B5Fxx* Nickel
*xx = AL, BK, IV, WH
 ●●●●



S-Video
IC107SV1xx*
 S-Video to IDC
*xx = AL, BK, IV, WH
 ●●●●



RCA Audio/Video
IC107K6Gxx* Black
IC107R6Gxx* Red
IC107Y6Gxx* Yellow
IC107B6Gxx* White
IC107G6Gxx* Green
IC107L6Gxx* Blue
 Insert Color
*xx = AL, IV, WH
 ●●●●



RCA Audio/Video
IC107KFGxx* Black
IC107RFGxx* Red
IC107YFGxx* Yellow
IC107BFGxx* White
IC107GFGxx* Green
IC107LFGxx* Blue
 Insert Color
*xx = AL, IV, WH
 ●●●●



RCA Audio/Video
IC107K8Gxx* Black
IC107R8Gxx* Red
IC107Y8Gxx* Yellow
IC107B8Gxx* White
 Insert Color
*xx = AL, IV, WH
 ●●●●



RCA Audio/Video
IC107RQKWH Black
IC107RQRWH Red
IC107RQYWH Yellow
IC107RQWWH White
IC107RQGWH Green
IC107RQLWH Blue
 Insert Color
*xx = WH
 ●



RCA Audio/Video
IC107B7Gxx*
 Female-to-Solder Tail,
 Solder Tail for
 Permanent Installation
*xx = AL, IV, WH
 ●●●●



BNC Video
IC107B3Gxx*
 BNC, 50 Ohm.
*xx = IV, WH
 ●●

IC107BNCxx*
 BNC, 75 Ohm.



Blank
IC107BN0xx*
 Blank Fill-in, 10 pcs.
IC107BN2xx*
 Blank Feedthrough,
 0.3 in. Diameter Hole,
 10 pcs.
*xx = AL, BK, GY, IV, WH
 ●●●●●●

(Color Codes) xx* = AL (Almond), BK (Black), BL (Blue), GN (Green), GY (Gray), IV (Ivory), OR (Orange), PR (Purple), RD (Red), WH (White), YL (Yellow)